

# Index

<b>1. Introduction .....</b>	<b>1</b>
<b>2. Installation of USB to Serial Converter</b>	
<b>Under Windows 98SE.....</b>	<b>2</b>
<b>3. Installation of USB to Serial Converter</b>	
<b>Under Windows ME.....</b>	<b>6</b>
<b>4. Installation of USB to Serial Converter</b>	
<b>Under Windows 2000.....</b>	<b>10</b>
<b>5. Installation of USB to Serial Converter</b>	
<b>Under Windows XP.....</b>	<b>13</b>
<b>6. Installation of USB to Serial Converter</b>	
<b>Under Windows Vista.....</b>	<b>16</b>
<b>7. Installation of USB to Serial Converter</b>	
<b>Under Mac.....</b>	<b>19</b>

# Introduction

Thank you for ordering the USB-to Serial Converter. The USB-RS232 Converter is an intelligent, stackable expansion module that connects to a PC or server via the Universal Serial Bus (USB) port, providing one high-speed RS-232 serial port. The USB-RS232 features easy connectivity for traditional serial, and others USB devices.

## System Requirements

- ★ Pentium-class CPU with USB port PC.
- ★ 1 available USB type A (downstream) port.
- ★ Windows 98SE, Windows ME, Windows 2000, Windows XP, Windows Vista  
Mac 8.6 ~ 10.3.x.

## Special Note:

Follow your USB to Serial Converter installation instructions to add the device. Please make sure your device has installed successfully and it can work on your computer.

1. Setup for Standard USB to Serial Converter /Serial Mouse Connecting your standard device into USB to Serial Converter after installation completed. The re-plugging the upstream port (USB Type A) of USB to Serial Converter.

- ★ You have to re-plugging the upstream port (USB Type A) of USB to Serial Converter when you re-plug or change the serial devices / Serial Mouse.

2. Setup for serial modem

When prompted to select the port, choose the **Serial USB (COM x)**, where x is the COM port number assigned by your operating.

# Installation of USB to Serial Converter under Windows 98SE

## Note:

Do not plug the USB to Serial Converter into the system before finished the driver installation.

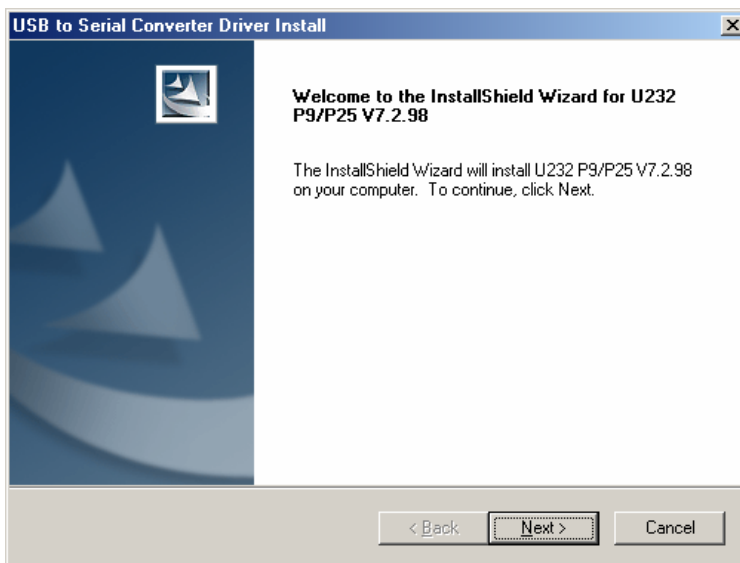
## ■ Software Installation

### Step1.

Please insert the driver CD into the CD-ROM. Setup will begin automatically.

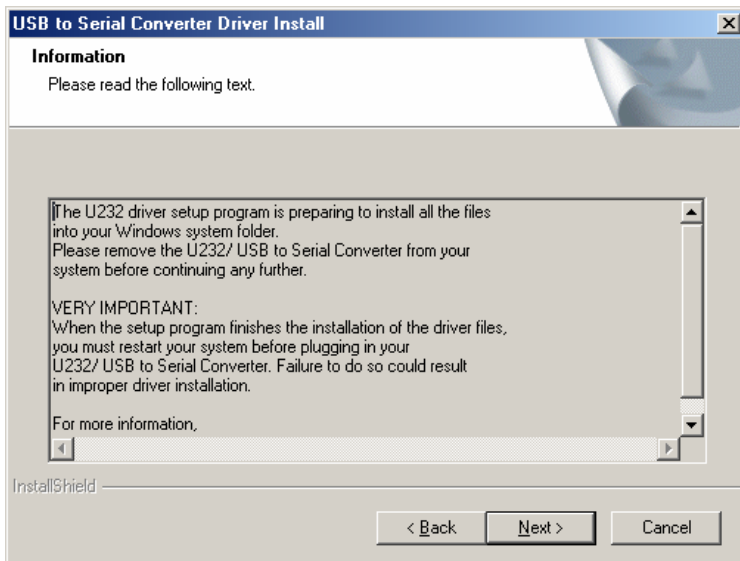
### Step2.

Click “Next” to continue.



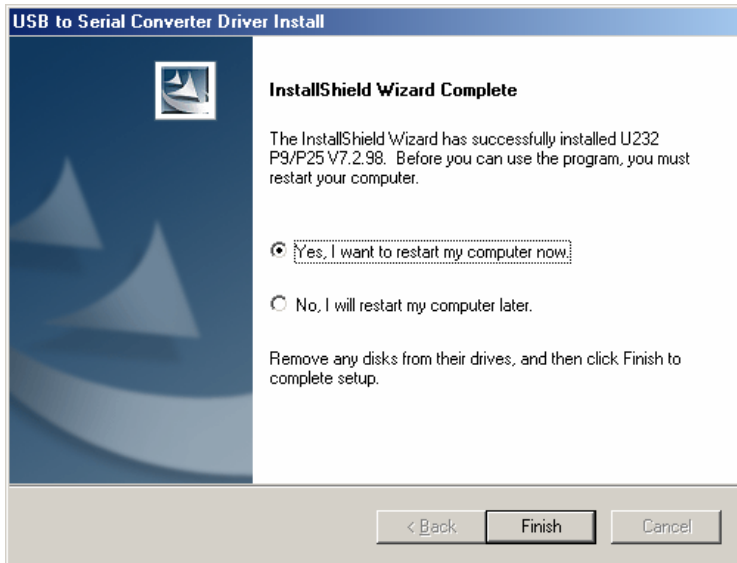
### Step3.

Click “Next” to continue.



## Step4.

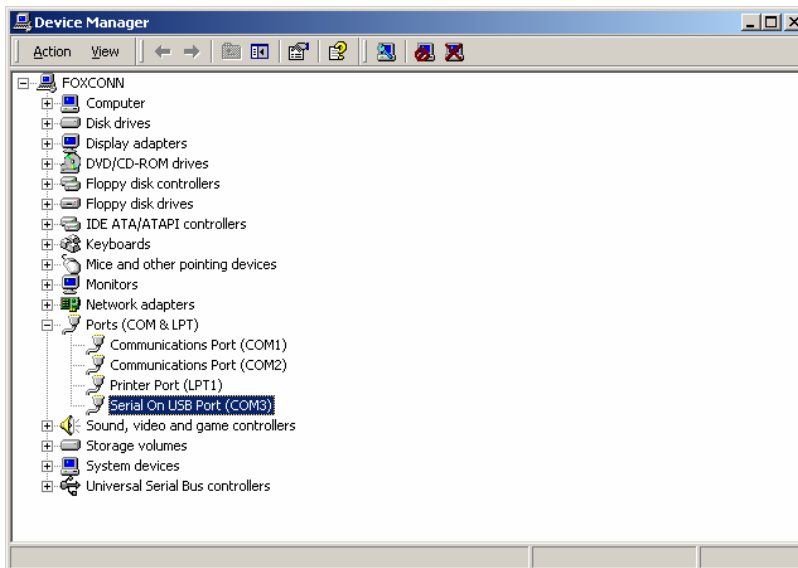
- 1) Select “ **Yes, I want to restart my computer.** “
- 2) Click “ **Finish** “ to complete setup.



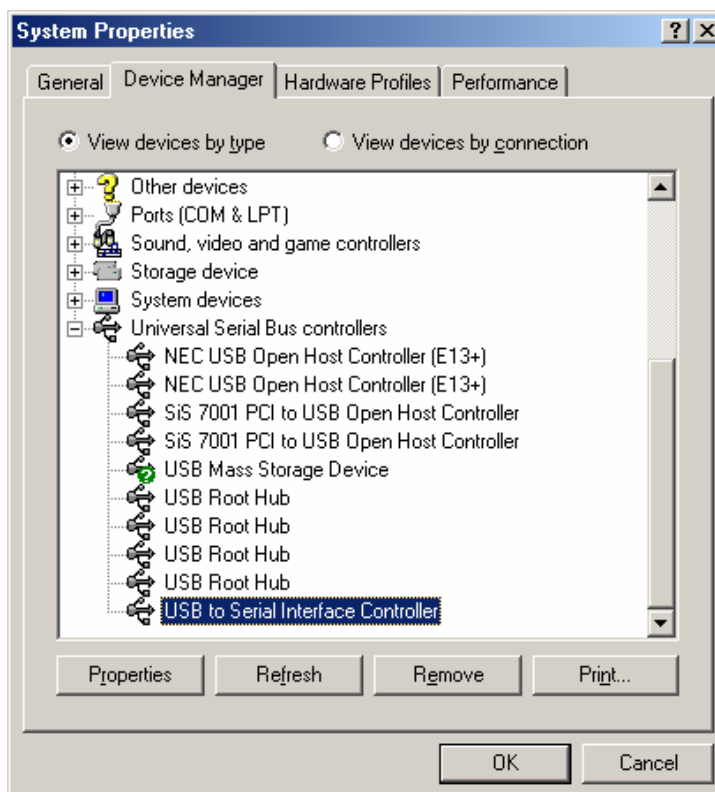
Congratulations!! You have finished installing the USB to Serial Converter.

## ■ Verifying devices are installed successfully

1. Please move the cursor to “ **My computer** “. Click the mouse right button. It will show a dialog, then click “ **Control Panel** “ “ **System** “ “ **Hardware** “ “ **Device Manager** “. Double click “ **Ports[COM&LPT]** “ , it will show a new direction “ **Serial on USB [COM3]** “



2. Under the same window, double click “ **Universal Serial Bus controller** “ , it will Show a new direction “ **USB to Serial Interface Controller** “.

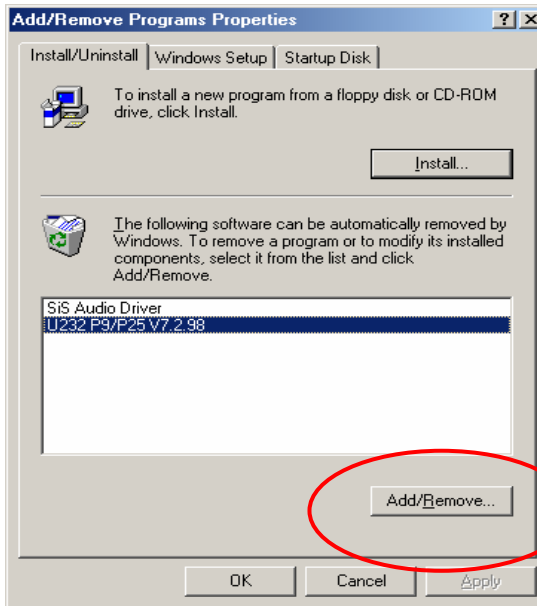


## ■ Un-installation

If you want to remove the USB to Serial Converter driver, please click “ **Start** ” → “ **Control Panel** ” → “ **Add Remove Programs** ” , then follow the procedure:

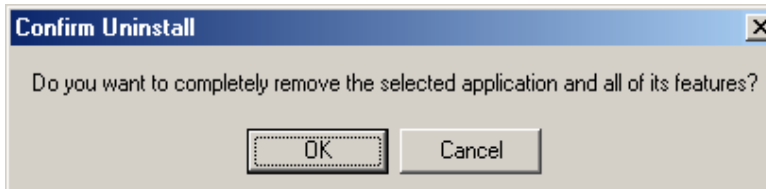
### Step1.

Select “ **U232 P9/P25 V7.2.98** ” then click “ **Add/Remove** ” to continue.



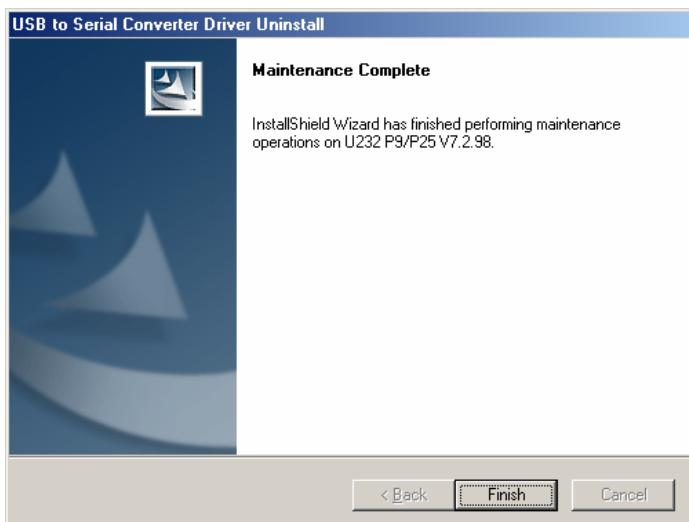
### Step2.

Click “ **OK** ” to continue.



### Step3.

Click “ **Finish** ” to restart your computer and complete removing the USB to Serial Converter driver.



# Installation of USB to Serial Converter under Windows Me

## Note:

Do not plug the USB to Serial Converter into the system before the driver is finished installing.

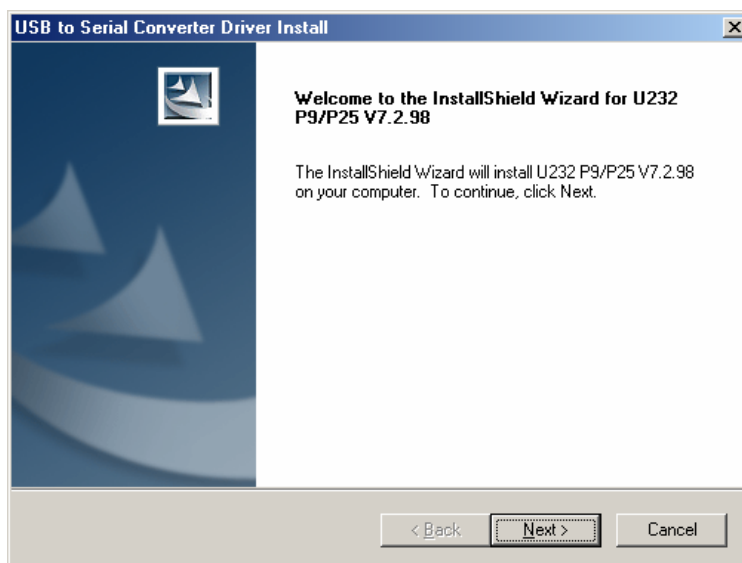
## ■ Software Installation

### Step1.

Please insert the driver CD into the CD-ROM. Setup will begin automatically.

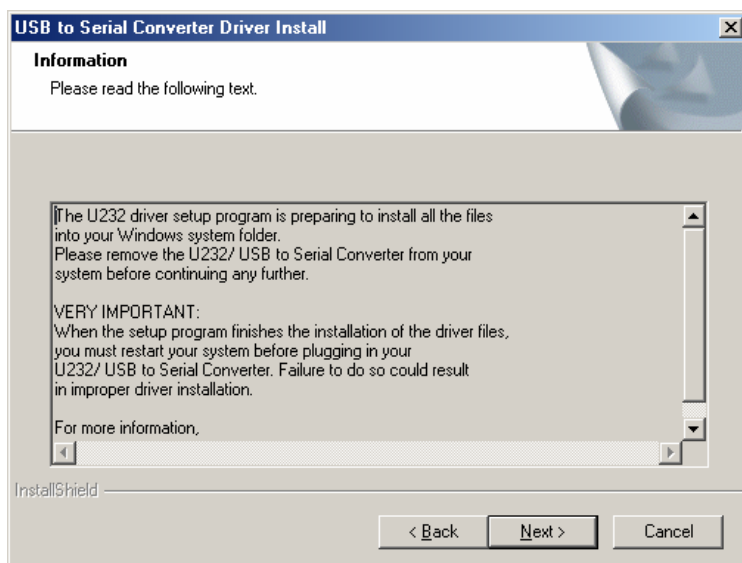
### Step2.

Click “Next” to continue.



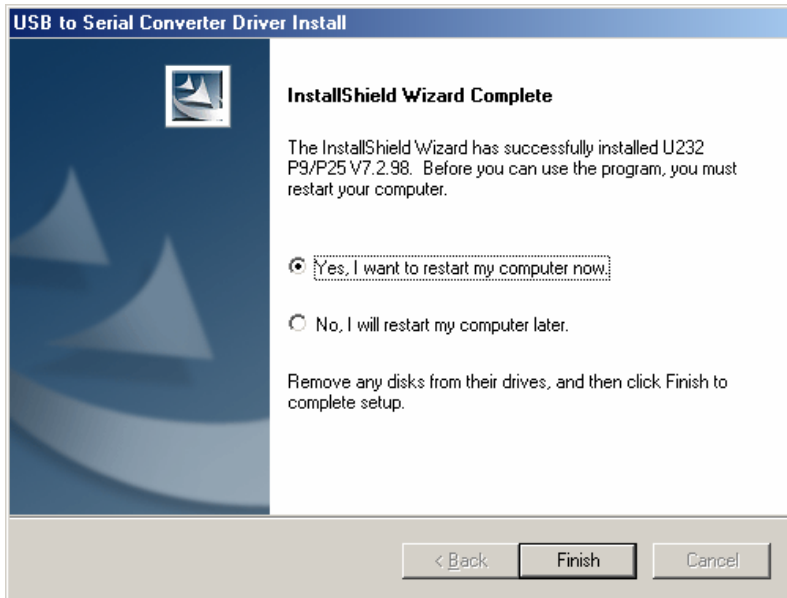
### Step3.

Click “Next” to continue.



## Step4.

- 1) Select “ **Yes, I want to restart my computer.** “
- 2) Click “ **Finish** “ to complete setup.

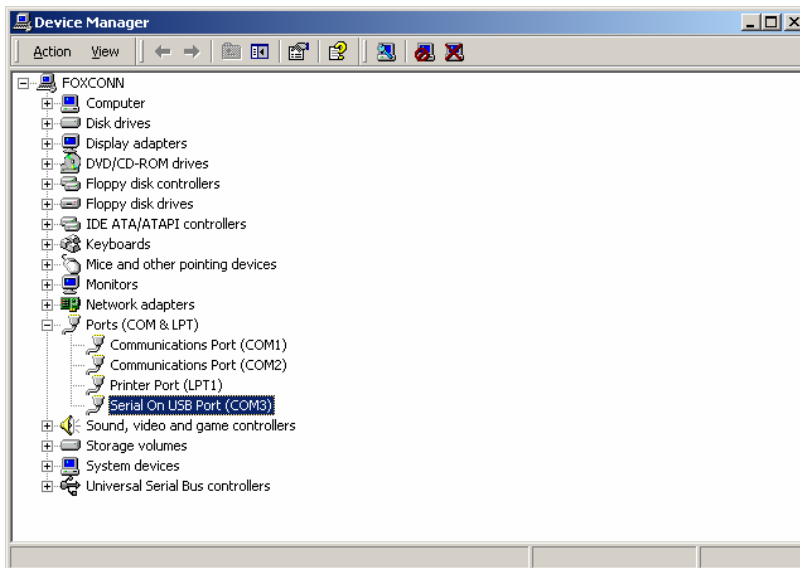


Congratulations!! You have finished installing the USB to Serial Converter.

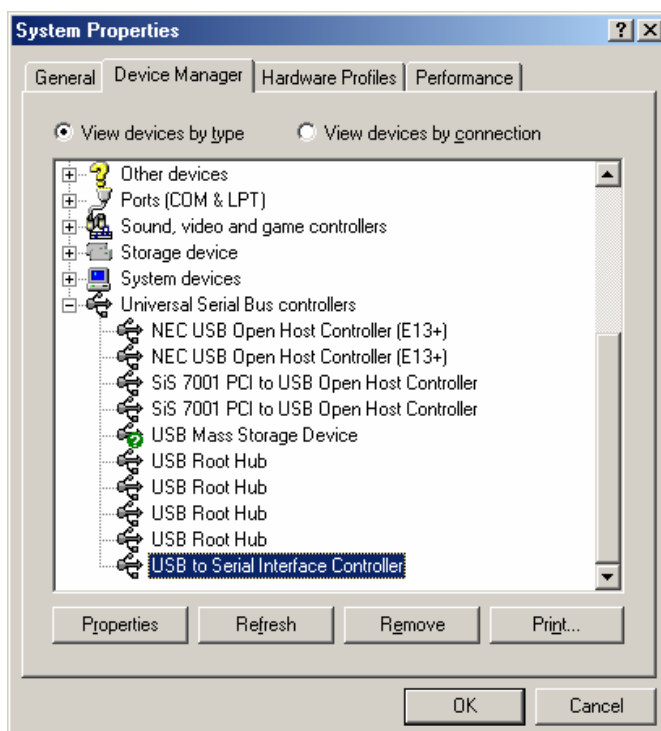


## ■ Verifying devices are installed successfully

1. Please move the cursor to “ **My computer** “. Click the mouse right button. It will show a dialog, then click “ **Control Panel** ” → “ **System** ” → “ **Hardware** ” → “ **Device Manager** “. Double click “ **Ports[COM&LPT]** “ , it will show a new direction “ **Serial on USB [COM3]** “



2. Under the same window, double click “ **Universal Serial Bus controller** “ , it will Show a new direction “ **USB to Serial Interface Controller** “.

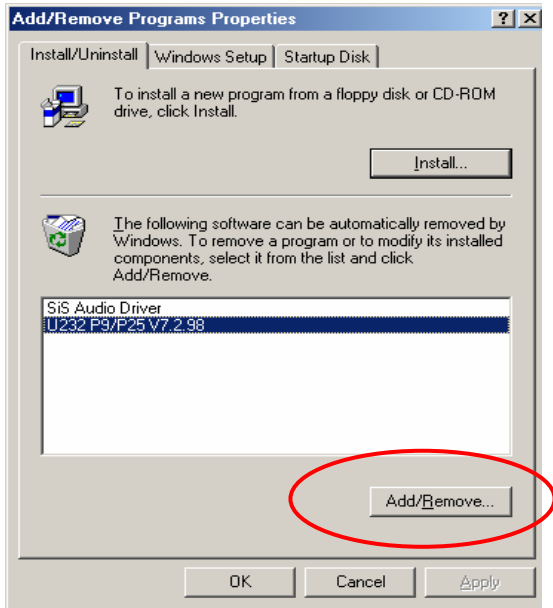


## ■ Un-installation

If you want to remove the USB to Serial Converter driver, please click “ **Start** ” → “ **Control Panel** ” → “ **Add Remove Programs** ” , then follow the procedure:

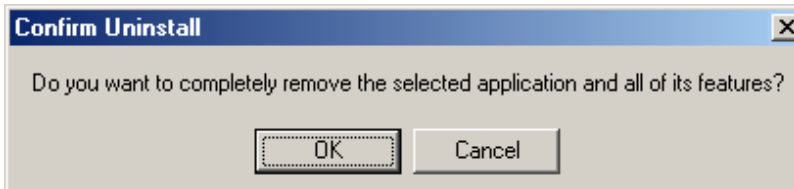
### Step1.

Select “ **U232 P9/P25 V7.2.98** ” then click “ **Add/Remove** ” to continue.



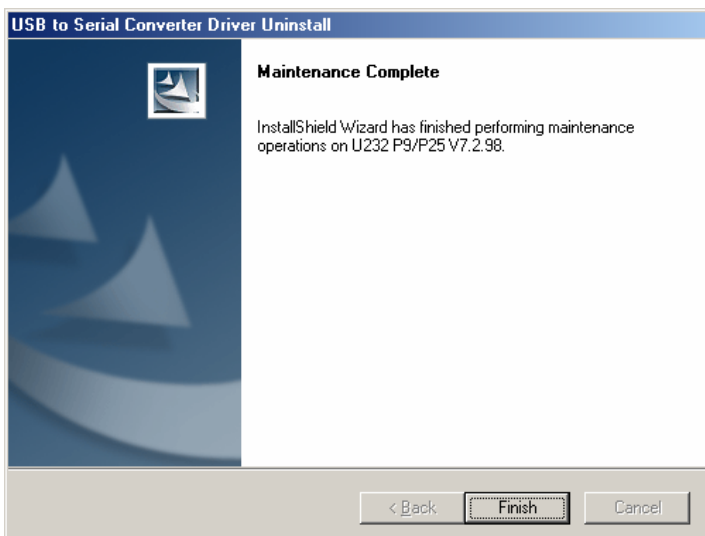
### Step2.

Click “ **OK** ” to continue.



### Step3.

Click “ **Finish** ” to restart your computer and complete removing the USB to Serial Converter driver.



# Installation of USB to Serial Converter under Windows 2000

## Note:

Do not plug the USB to Serial Converter into the system before the driver is finished installing.

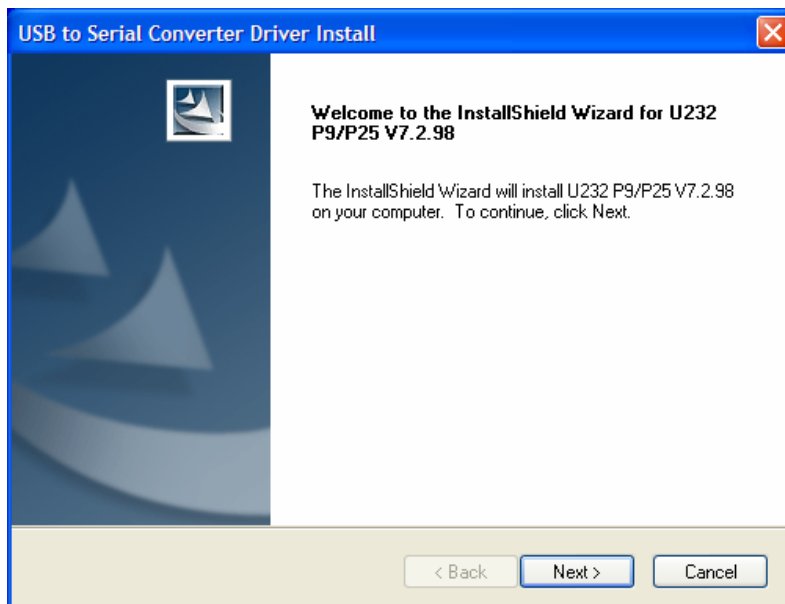
## ■ Software Installation

### Step1.

Please insert the driver CD into the CD-ROM. Setup will begin automatically.

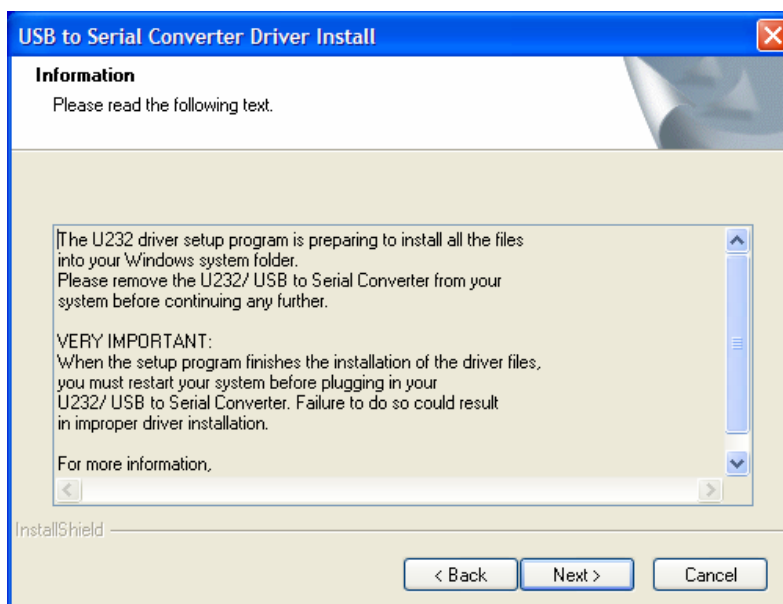
### Step2.

Click “ **Next** ” to continue.



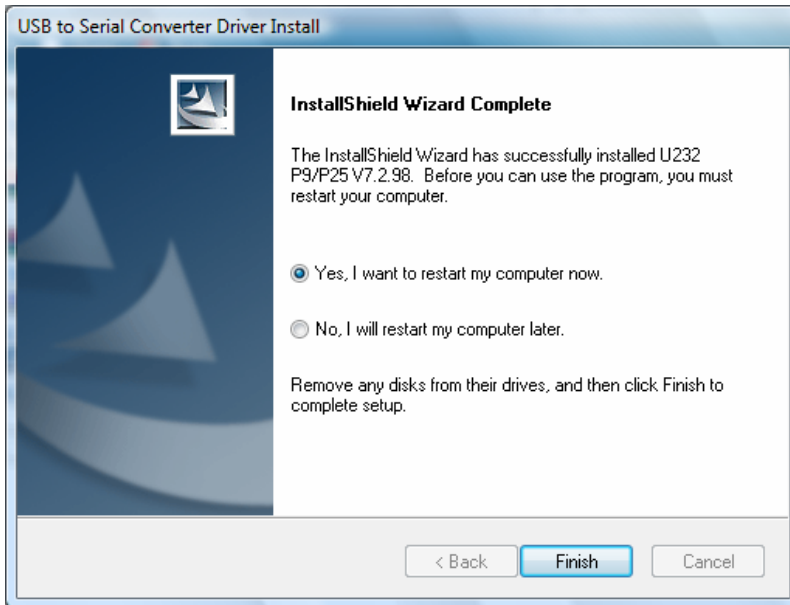
### Step3.

Click “ **Next** ” to continue.



## Step4.

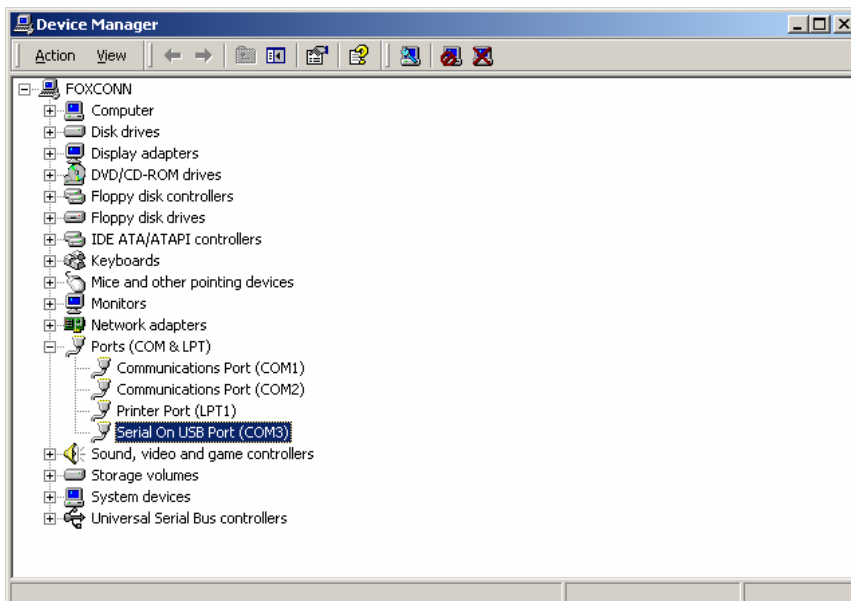
- 1) Select “ **Yes, I want to restart my computer.** ”
- 2) Click “ **Finish** ” to complete setup.



Congratulations!! You have finished installing the USB to Serial Converter.

## ■ Verifying devices are installed successfully

Please move the cursor to “ **My computer** ”. Click the mouse right button. It will show a dialog, then click “ **Control Panel** ” → “ **System** ” → “ **Hardware** ” → “ **Device Manager** ”. Double click “ **Ports[COM&LPT]** ”, it will show a new direction “ **Serial on USB [COM3]** ”

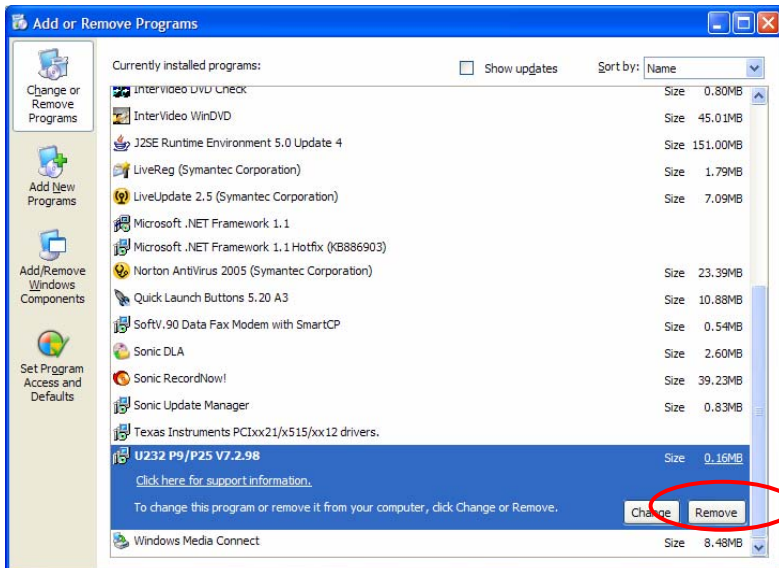


## ■ Un-installation

If you want to remove the USB to Serial Converter driver, please click “ **Start** ”→ “ **Control Panel** ”→ “ **Add Remove Programs** ” , then follow the procedure:

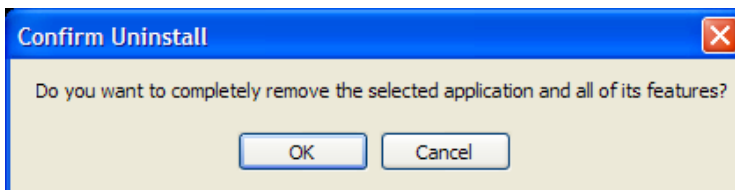
### Step1.

Select “ **U232 P9/P25 V7.2.98** ” then click “ **Remove** ” to continue.



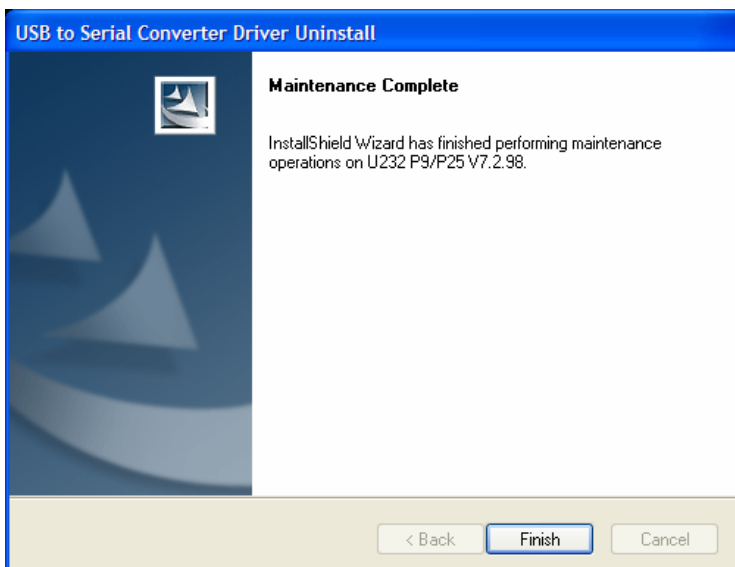
### Step2.

Click “ **OK** ” to continue.



### Step3.

Click “ **Finish** ” to restart your computer and complete removing the USB to Serial Converter driver.



# Installation of USB to Serial Converter under Windows XP

## Note:

Do not plug the USB to Serial Converter into the system before the driver is finished installing.

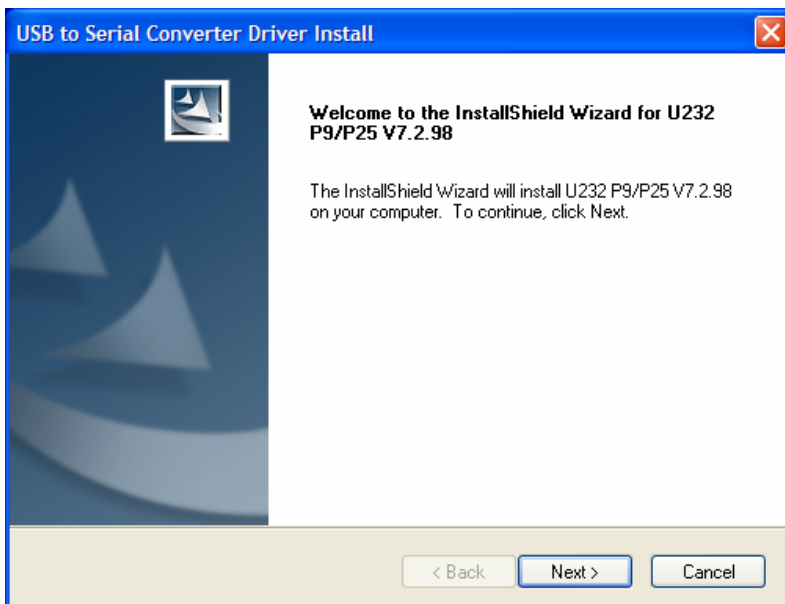
## ■ Software Installation

### Step1.

Please insert the driver CD into the CD-ROM. Setup will begin automatically.

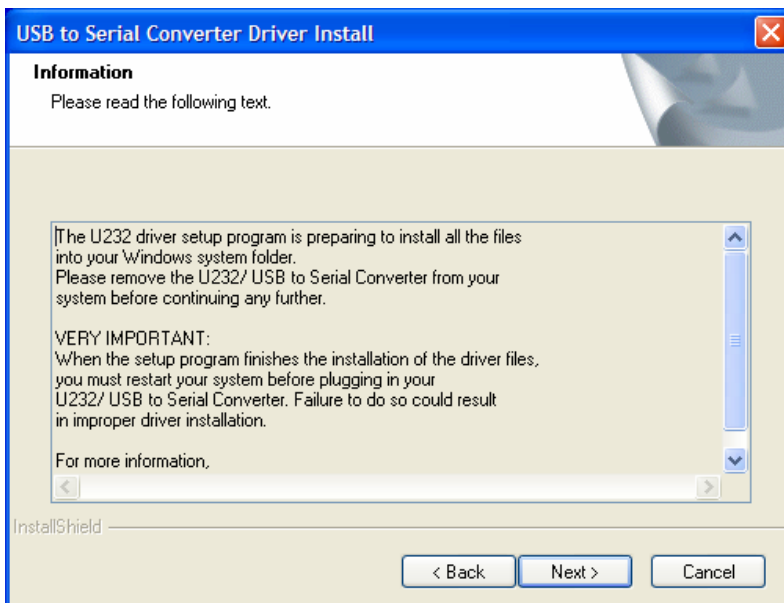
### Step2.

Click “ **Next** ” to continue.



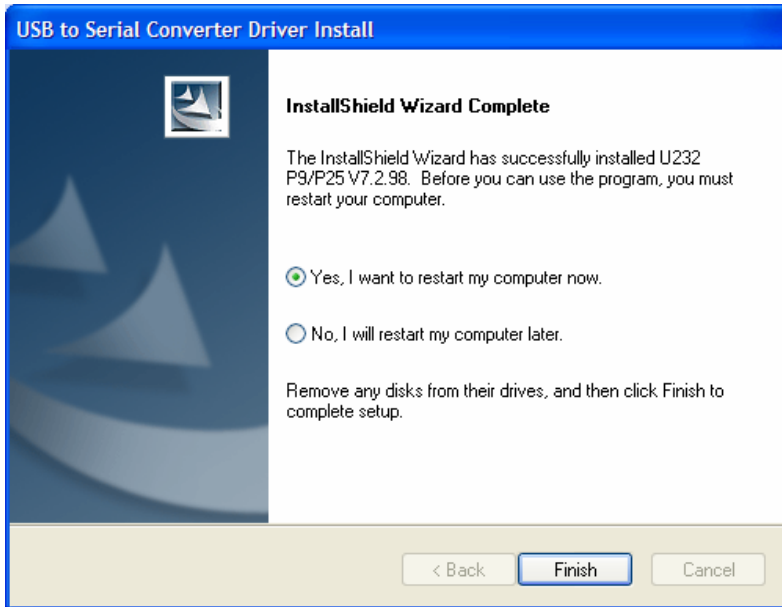
### Step3.

Click “ **Next** ” to continue.



## Step4.

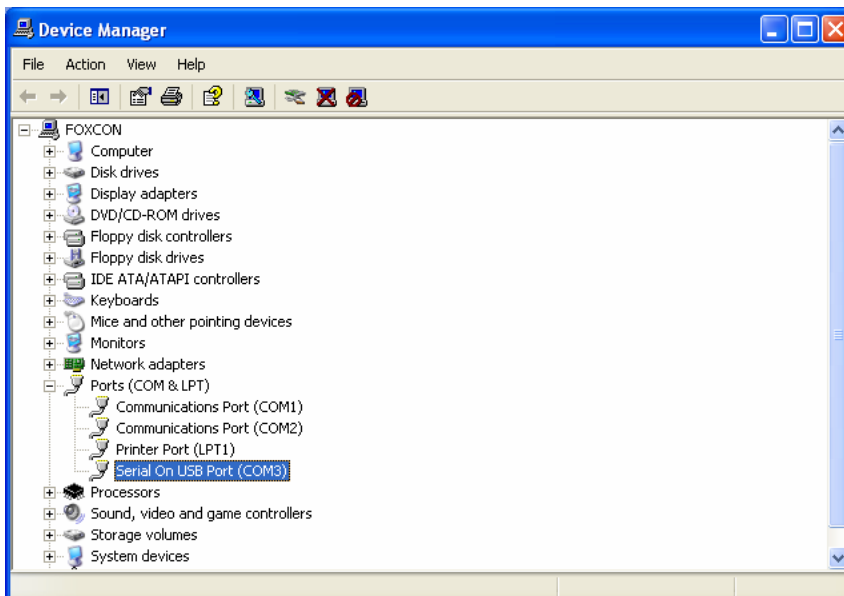
- 1) Select “ **Yes, I want to restart my computer.** ”
- 2) Click “ **Finish** ” to complete setup.



Congratulations!! You have finished installing the USB to Serial Converter.

### ■ Verifying devices are installed successfully

Please move the cursor to “ **My computer** “. Click the mouse right button. It will show a dialog, then click “ **Control Panel** ” → “ **System** ” → “ **Hardware** ” → “ **Device Manager** “. Double click “ **Ports[COM&LPT]** ” , it will show a new direction “ **Serial on USB [COM3]** ”

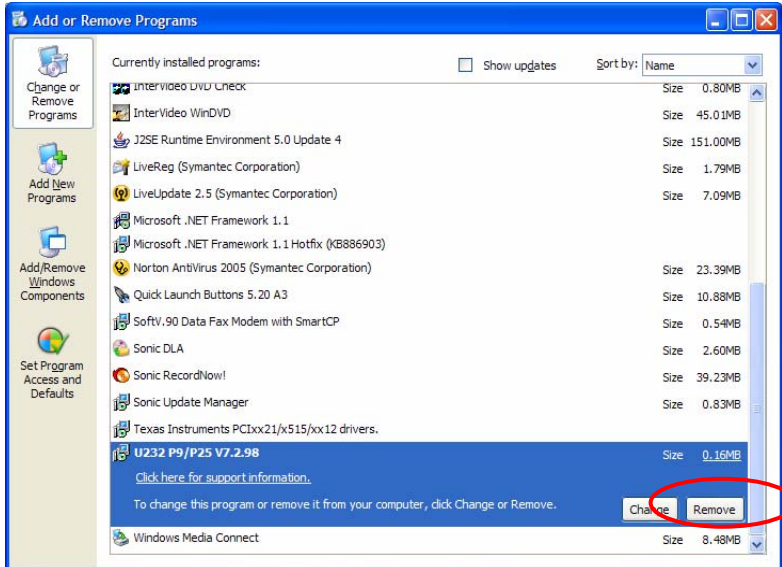


## ■ Un-installation

If you want to remove the USB to Serial Converter driver, please click “ **Start** ”→ “ **Control Panel** ”→ “ **Add Remove Programs** ”, then follow the procedure:

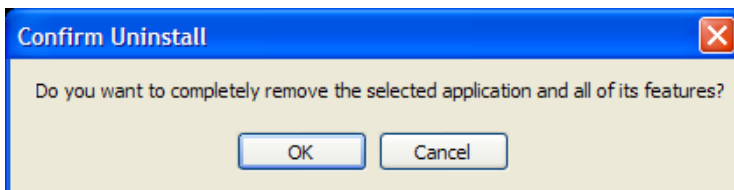
### Step1.

Select “ **U232 P9/P25 V7.2.98** ” then click “ **Remove** ” to continue.



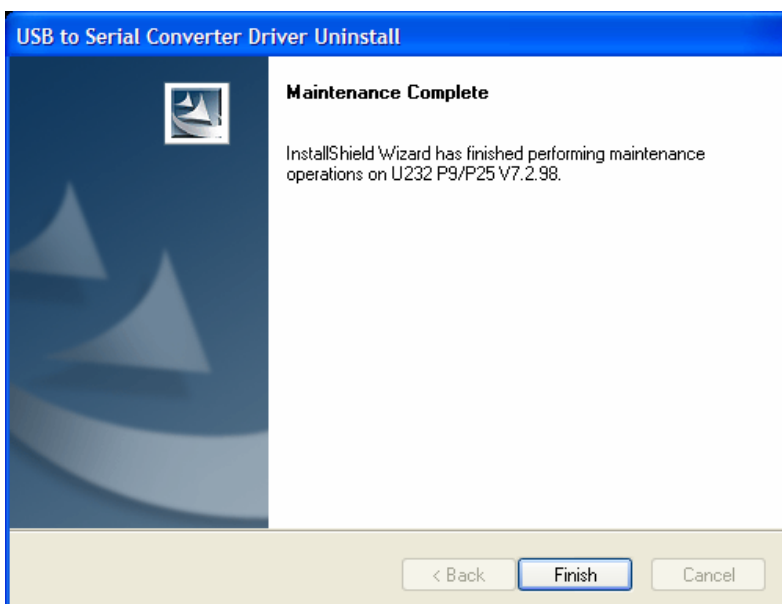
### Step2.

Click “ **OK** ” to continue.



### Step3.

Click “ **Finish** ” to restart your computer and complete removing the USB to Serial Converter driver.





# Installation of USB to Serial Converter under Windows Vista

## Note:

Do not plug the USB to Serial Converter into the system before the driver is finished installing.

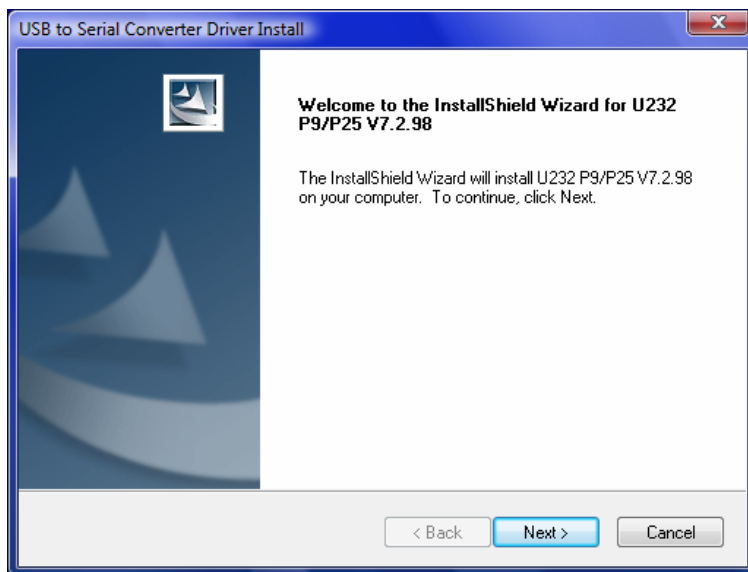
## ■ Software Installation

### Step1.

Please insert the driver CD into the CD-ROM. Setup will begin automatically.

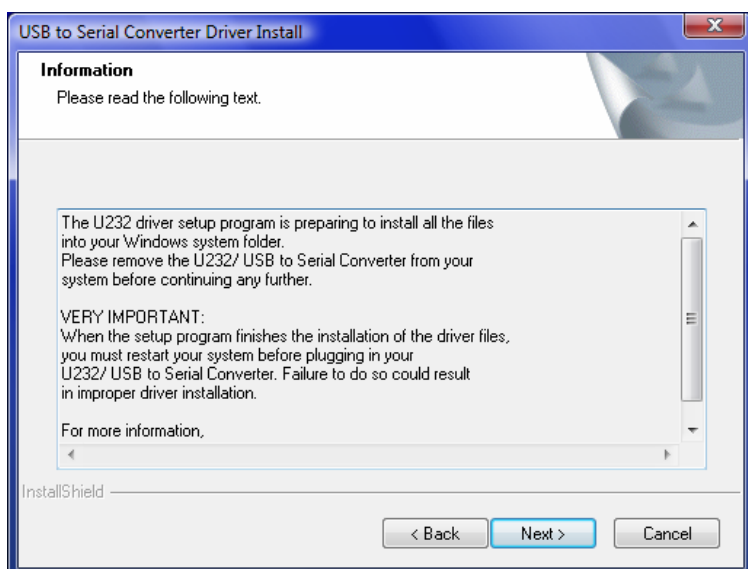
### Step2.

Click “ **Next** ” to continue.



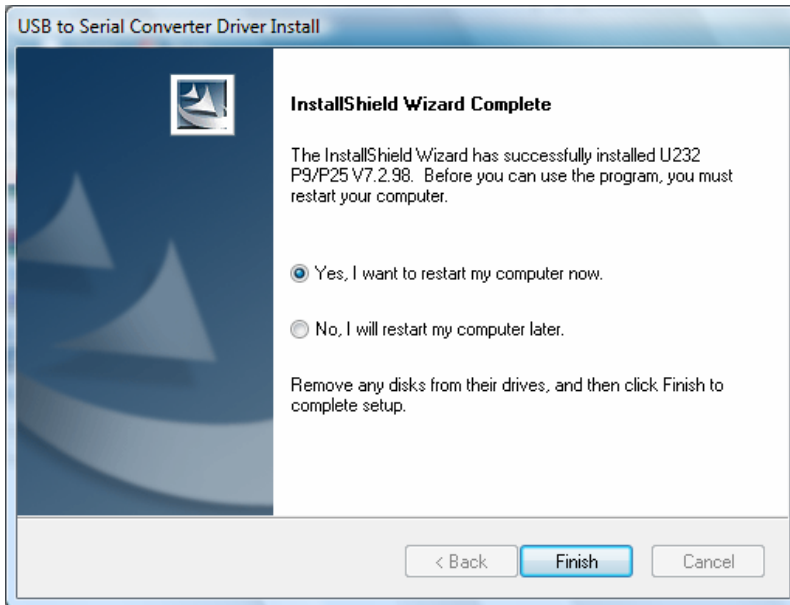
### Step3.

Click “ **Next** ” to continue.



## Step4.

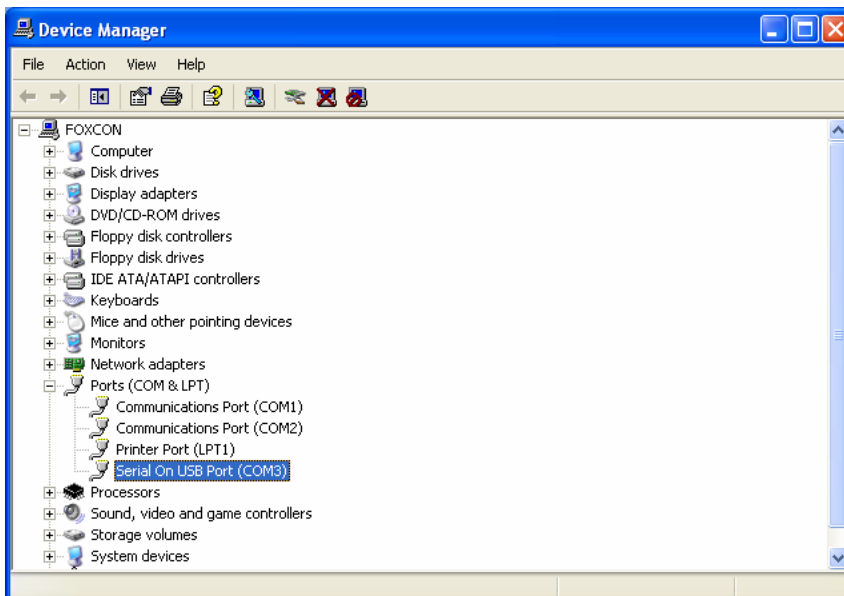
- 1) Select “ **Yes, I want to restart my computer.** ”
- 2) Click “ **Finish** ” to complete setup.



Congratulations!! You have finished installing the USB to Serial Converter.

## ■ Verifying devices are installed successfully

Please move the cursor to “ **My computer** “. Click the mouse right button. It will show a dialog, then click “ **Control Panel** ” → “ **Device Manager** ” → “ **Programs and Features** “. Double click “ **Ports[COM&LPT]** “ , it will show a new direction “ **Serial on USB [COM3]** “

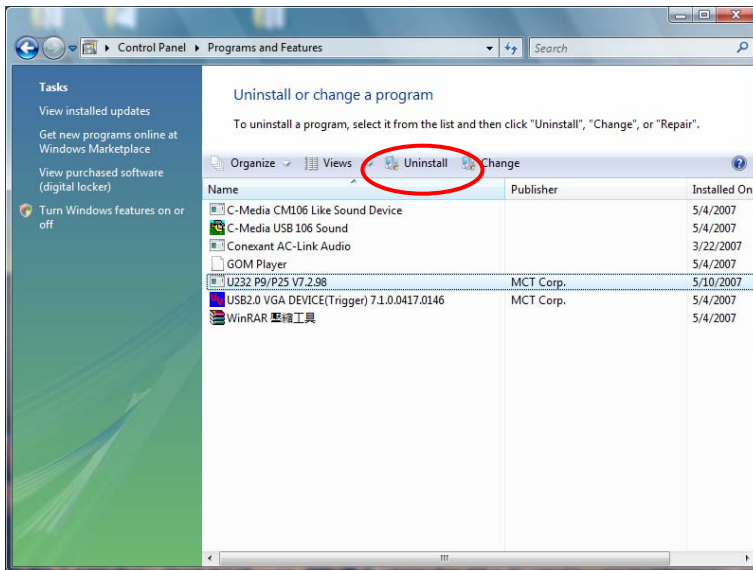


## ■ Un-installation

If you want to remove the USB to Serial Converter driver, please click “ **Start** ”→ “ **Control Panel** ”→ “ **Programs and Features** ” , then follow the procedure:

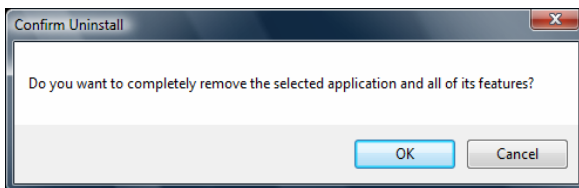
### Step1.

Select “ **U232 P9/P25 V7.2.98** ” then click “ **Uninstall** ” to continue.



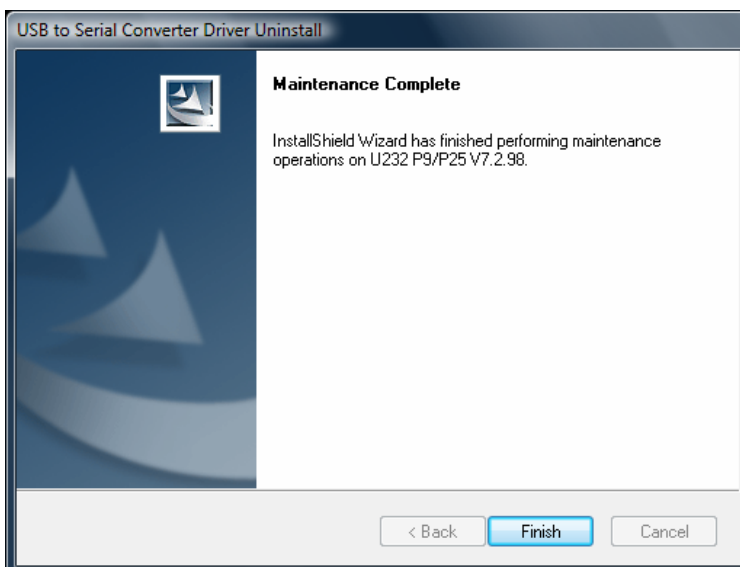
### Step2.

Click “ **OK** ” to continue.



### Step3.

Click “ **Finish** ” to restart your computer and complete removing the USB to Serial Converter driver.



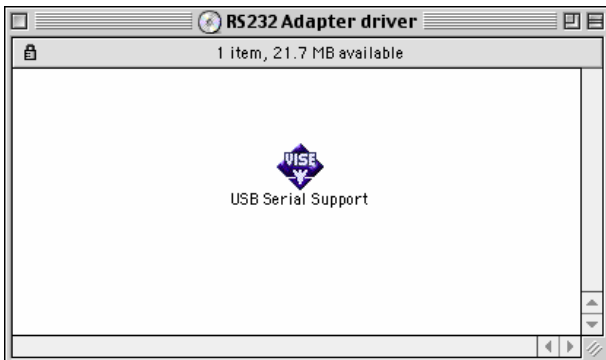
# Installation of USB to Serial Converter under Mac

## Note :

1. Please install USB-RS232 Converter and follow the procedure as below.
2. Plug the USB-RS232 Converter into the USB port of your computer.

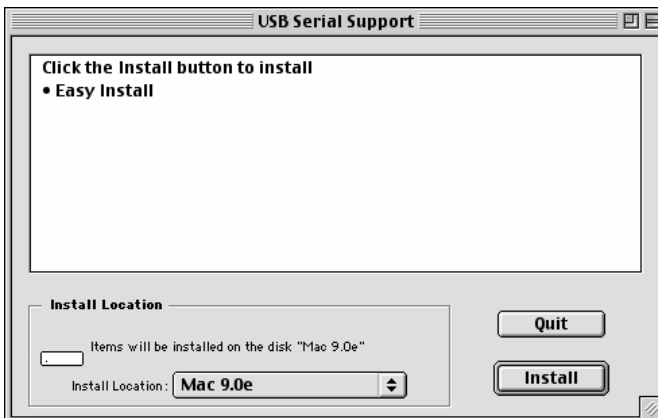
## Step 1:

- (A) Please insert the driver disk into your computer.
- (B) Double click "USB Serial Support" to continue.



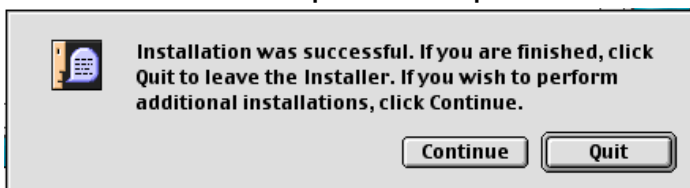
## Step 2:

Click "Install" to continue.



## Step 3:

Click "Quit" to complete setup.



◆ To make sure the USB to Serial Converter has installed successfully

Please move the cursor to “Hard Disk” → “System Folder” → “Extensions”. It will create new direction “Serial Shim Lib” and “USB RS232 Support”.

(A)



(B)



## ◆ Un-installation

If you want to remove the driver of USB RS232 Converter, please move the cursor to “Hard Disk” → “System Folder” → “Extensions” then move the “Serial Shim Lib” and “USB RS232 Support” to trash.

(A)



(B)

